

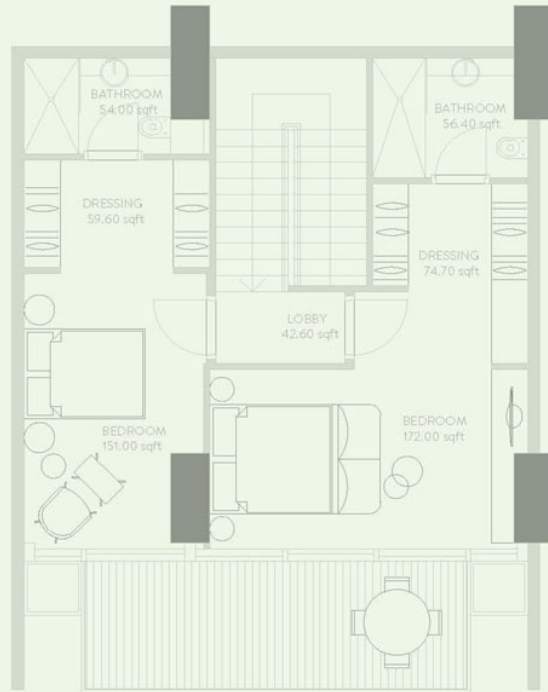
TWO BEDROOM DUPLEX - TYPE A ONE

TOTAL AREA = 238.35 SQ. M. = 2565.57 SQ. FT.
OUTDOOR AREA = 95.10 SQ. M. = 1,023.68 SQ. FT.
INDOOR AREA = 145.35 SQ. M. = 1564.53 SQ. FT.
NUMBER OF UNITS = 4 NOS.

LOWER LEVEL



UPPER LEVEL



TWO BEDROOM DUPLEX - TYPE A TWO

TOTAL AREA = 254.19 SQ. M. = 2736.07 SQ. FT.
OUTDOOR AREA = 110.44 SQ. M. = 1,188.80 SQ. FT.
INDOOR AREA = 145.35 SQ. M. = 1564.53 SQ. FT.
NUMBER OF UNITS = 1 NOS.