

DUBAI HILLS
 ESTATE

GOLFVILLE

BLOCK A | 2 BEDROOM

UNIT 1 LEVEL 2 - 7, 8 - 13	
SUITE AREA	715.05 Sq.ft. / 66.43 Sq.m.
BALCONY AREA	28.09 Sq.ft. / 2.61 Sq.m.
TOTAL AREA	743.14 Sq.ft. / 69.04 Sq.m.

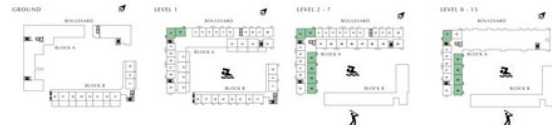
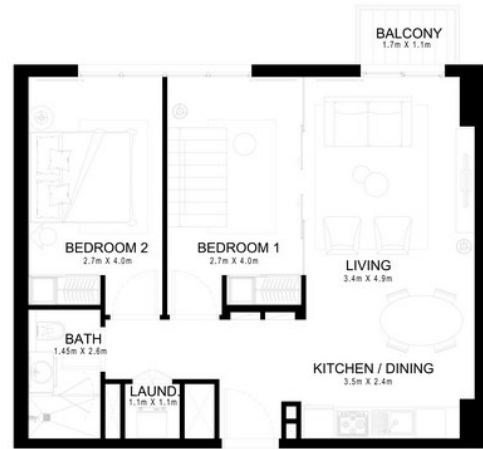
UNIT 2 LEVEL 2 - 7, 8 - 13	
SUITE AREA	714.51 Sq.ft. / 66.38 Sq.m.
BALCONY AREA	28.09 Sq.ft. / 2.61 Sq.m.
TOTAL AREA	742.60 Sq.ft. / 68.99 Sq.m.

UNIT 3 LEVEL 2 - 7, 8 - 13	
SUITE AREA	716.55 Sq.ft. / 66.57 Sq.m.
BALCONY AREA	28.09 Sq.ft. / 2.61 Sq.m.
TOTAL AREA	744.64 Sq.ft. / 69.18 Sq.m.

UNIT 4 LEVEL 2 - 7, 8 - 13	
SUITE AREA	709.66 Sq.ft. / 65.93 Sq.m.
BALCONY AREA	28.09 Sq.ft. / 2.61 Sq.m.
TOTAL AREA	737.75 Sq.ft. / 68.54 Sq.m.

UNIT 11 LEVEL 1, 2 - 7, 8 - 13	
SUITE AREA	737.33 Sq.ft. / 68.50 Sq.m.
BALCONY AREA	28.09 Sq.ft. / 2.61 Sq.m.
TOTAL AREA	765.42 Sq.ft. / 71.11 Sq.m.

UNIT 12 LEVEL 1, 2 - 7	
SUITE AREA	707.30 Sq.ft. / 65.71 Sq.m.
BALCONY AREA	28.09 Sq.ft. / 2.61 Sq.m.
TOTAL AREA	735.39 Sq.ft. / 68.32 Sq.m.



FLOOR PLAN 1. All dimensions are in imperial and metric, and measured from finish to finish excluding construction tolerances. 2. All materials, dimensions, and drawings are approximate only. 3. Information is subject to change without notice, at developer's absolute discretion. 4. Actual area may vary from the stated area. 5. Drawings not to scale. 6. All images used are for illustrative purposes only and do not represent the actual size, features, specifications, fittings, and furnishings. 7. The developer reserves the right to make revisions / alterations, at it's absolute discretion, without any liability whatsoever.

EMAAR

real estate management supervision services
 buying and selling of real estate
 leasing property brokerage agents
 self - owned property leasing and management services
 real estate buying & selling brokerage

تاراقعدلا ي رادلا فاشلا تاامدخ
 اهبب و تاراقعدلا و يضا رلا اارش
 تاراقعدلا ريجات ي فمطاسولا
 تصاخلا تاراقعدلا راداو ريجات تاامدخ
 اهارش و تاراقعدلا بب ي فمطاسولا