

**DUBAI HILLS**  
 ESTATE

**GOLFVILLE**

**BLOCK A | 2 BEDROOM**

UNIT 1   LEVEL 2 - 7, 8 - 13		
SUITE AREA	715.05 Sq.ft.	66.43 Sq.m.
BALCONY AREA	28.09 Sq.ft.	2.61 Sq.m.
TOTAL AREA	743.14 Sq.ft.	69.04 Sq.m.

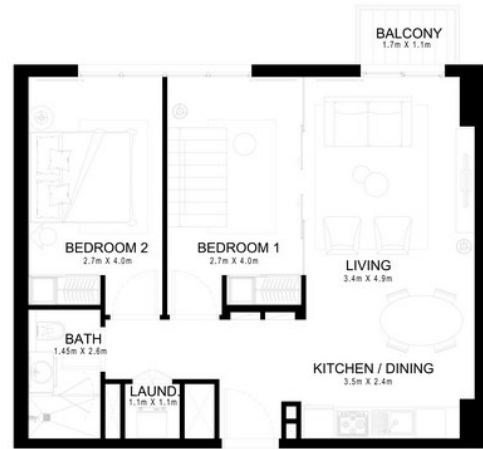
UNIT 2   LEVEL 2 - 7, 8 - 13		
SUITE AREA	714.51 Sq.ft.	66.38 Sq.m.
BALCONY AREA	28.09 Sq.ft.	2.61 Sq.m.
TOTAL AREA	742.60 Sq.ft.	68.99 Sq.m.

UNIT 3   LEVEL 2 - 7, 8 - 13		
SUITE AREA	716.55 Sq.ft.	66.57 Sq.m.
BALCONY AREA	28.09 Sq.ft.	2.61 Sq.m.
TOTAL AREA	744.64 Sq.ft.	69.18 Sq.m.

UNIT 4   LEVEL 2 - 7, 8 - 13		
SUITE AREA	709.66 Sq.ft.	65.93 Sq.m.
BALCONY AREA	28.09 Sq.ft.	2.61 Sq.m.
TOTAL AREA	737.75 Sq.ft.	68.54 Sq.m.

UNIT 11   LEVEL 1, 2 - 7, 8 - 13		
SUITE AREA	737.33 Sq.ft.	68.50 Sq.m.
BALCONY AREA	28.09 Sq.ft.	2.61 Sq.m.
TOTAL AREA	765.42 Sq.ft.	71.11 Sq.m.

UNIT 12   LEVEL 1, 2 - 7		
SUITE AREA	707.30 Sq.ft.	65.71 Sq.m.
BALCONY AREA	28.09 Sq.ft.	2.61 Sq.m.
TOTAL AREA	735.39 Sq.ft.	68.32 Sq.m.



FLOOR PLAN 1. All dimensions are in imperial and metric, and measured from finish to finish excluding construction tolerances. 2. All materials, dimensions, and drawings are approximate only. 3. Information is subject to change without notice, at developer's absolute discretion. 4. Actual area may vary from the stated area. 5. Drawings not to scale. 6. All images used are for illustrative purposes only and do not represent the actual size, features, specifications, fittings, and furnishings. 7. The developer reserves the right to make revisions / alterations, at it's absolute discretion, without any liability whatsoever.

**EMAAR**

real estate management supervision services  
 buying and selling of real estate  
 leasing property brokerage agents  
 self - owned property leasing and management services  
 real estate buying & selling brokerage

تاراقعدلا ي رادلافا فارشلاإ تاامدخ  
 اهجيد و تاراقعدلا ويضارلاأ عارش  
 تاراقعدلا ريجآت ي فمطاسولا  
 قصابخلا تاراقعدلا ةراداو ريجآت تاامدخ  
 اهنارش و تاراقعدلا هج ي فمطاسولا